

SURFACE PROTECTION FOR CONCRETE

COLORFRESH® · COLORTEC® · PROWALL®





left: untreated concrete – water penetrates the surface on the right: protected with COLOR-FRESH® – water runs off

Surface Protection – The “Outdoor-Jacket” for concrete

If it's raining you wear a raincoat or take an umbrella. This should also apply for concrete if you have decided to use concrete on the outside of your building, because the concrete surface will be exposed to rain and weather. Sooner or later the results of this weathering will show.

Depending on the location and surface properties, efflorescence, moss, colour fading, frost damage etc. may bother you sooner or later. If you cannot make friends with this “patina”, here is the good news: You can do something to ensure that the concrete looks as good as new for a long time and it is actually quite simple. Instead of a raincoat or an umbrella you use a **HEBAU** protective coating for your concrete. How this works is shown in the diagram.

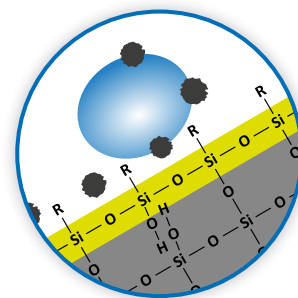
If buildings look good and well-kept from outside, this contributes to the value of the property and so it is worth spending a few minutes to study your possibilities.

Unprotected surface:

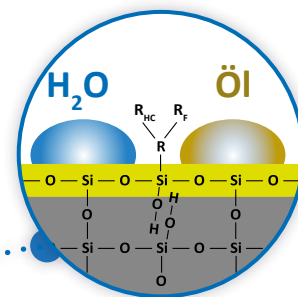
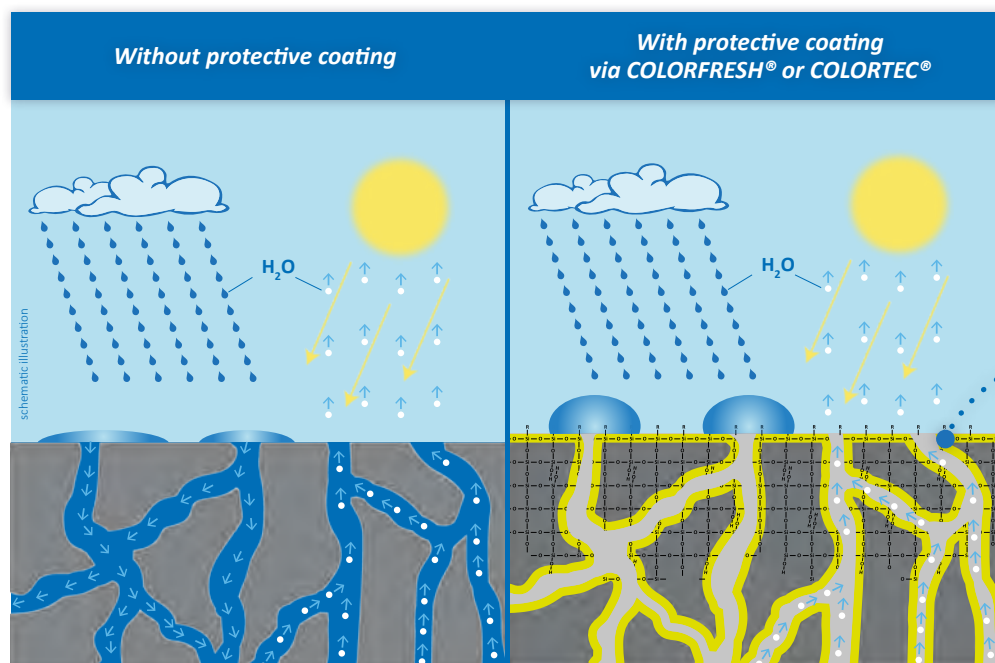
The capillary structure and its absorbency soak up moisture. The surface is hydrophilic. Drying leads to the diffusion of water vapour.

COLORFRESH® and COLORTEC®:

The capillary structure of the surface is protected by a micro-fine mesh. The hydrolysis principle creates a protective shield on the surface which points upwards and also constricts the capillary wall diameter. The surface tension of liquids is now too high to allow them to penetrate the structure. Water vapour diffusion can still take place.



Self-cleaning effect on inclined or vertical surfaces.



Depending on the composition, our protective coatings are either hydrophobic or hydrophobic and oleophobic.

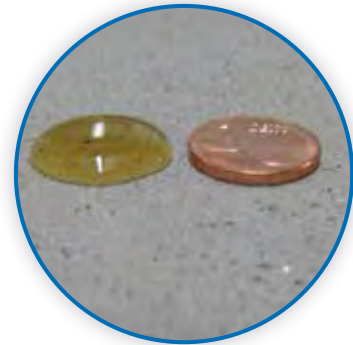
There are 3 options:



For producers of precast concrete: Apply a water-repelling protective coating “in-line” to protect the surface before arrival at the construction site. Can be applied onto smooth, fair-faced surfaces or exposed aggregate, acid-etched, polished, sand-/shot-blasted ... finishes. Especially suitable for precast concrete, cast stone, paving stones/slabs, terrazzo ...



Later on at the construction site: Apply a water-repelling protective coating on cast-in-place concrete after installation/completion of the building. Especially suitable for formliner-textured or smooth, fair-faced surfaces.



And always: Consider applying an anti-graffiti coating, especially onto surfaces which are outdoors and accessible for passers-by. **PROWALL®** can be applied onto all kinds of wall surfaces (even steel, wood, ...). **Tip: PROWALL®** is compatible with previously applied **COLORFRESH®/COLORTEC®** protective coatings.



Our technical consultants give individual advice about the dos and don'ts, offer support during testing with samples, can give seminars to your staff ...

By the way: We at **HEBAU** have been delivering products to protect concrete surfaces effectively and user-friendly since the 1980s and we see ourselves as pioneers in this method to increase the value of concrete surfaces.

And one more thing: Our products for the protection of concrete surfaces do not contain any solvents.

Member of:



Anti-Graffiti Coating – protect before it gets ugly



Photo: Kundle/Heilmann

if protected with **PROWALL®**
the graffiti can be removed easily

before



after

Graffiti is no longer just a problem in metropolitan areas. Even smaller towns or villages and rural home owners can

become victims of graffiti sprayers. But the good news is that a good graffiti protection ensures the easy removal of graffiti and maintains the value of the property.

PROWALL® is suitable for all kinds of wall surfaces, but especially recommended for outdoor areas with pedestrian accessibility.

PROWALL®

- is easy to apply
- is durable and UV resistant
- functions reliably
- is eco-friendly because water-based
- is “green” & sustainable because no chemicals are required for the removal of the graffiti – solely a high-pressure water cleaner is needed



PROWALL® is applied to the house wall with a roller / sprayer. Graffiti and other soiling can then be washed off easily.

Tip: PROWALL® is also compatible if the surface has already been protected against weathering by a **HEBAU** protective coating.

Protective coating agents

	COLORFRESH® intensiv	COLORTEC® Max	COLORTEC® finish	PROWALL®
Fields of application:				
concrete	✓	✓	✓	✓
natural stone	○	✓	○	✓
flooring	✓	✓	○	-
walls	✓	✓	✓	✓
indoor	✓	✓	✓	✓
outdoor	✓	✓	✓	✓

Suitable for following types of concrete:

prefabricated (precast) elements	✓	✓	✓	✓
cast-in-place (ready mixed) concrete	✓	○	✓	✓
self-compacting (self-levelling) concrete	✓	✓	✓	✓
dry-cast concrete paving/walling (pavers, blocks, bricks, slabs, tiles ...)	✓	✓	○	○
cast stone	✓	✓	✓	✓
wetcast concrete	✓	○	✓	○
terrazzo tiles + in-situ terrazzo	✓	✓	○	○
stamped concrete	✓	-	-	-

Suitable for following types of surface:

fair-faced or structured by formliner	✓	○	✓	✓
acid-etched	✓	✓	○	✓
sand-blasted / shot-blasted	✓	✓	✓	✓
exposed-aggregate	✓	✓	○	✓
bush-hammered	✓	✓	✓	✓
polished / grinded	✓	✓	○	✓

Characteristics:

invisible	-	✓	✓	✓
colour-enhancing	✓	-	-	-
creates a silky shine	✓	-	-	-
water-based / solvent-free	✓	✓	✓	✓
breathable / permits water vapour diffusion	✓	✓	✓	○
water-repellent / hydrophobic	✓	✓	✓	✓
oil-repellent / oleophobic	✓	✓	-	○
UV-resistant	✓	✓	✓	✓
applicable on dry surfaces	✓	✓	✓	✓
applicable on moist surfaces	✓	✓	✓	-

Protects against:

efflorescence	✓	✓	✓	-
freeze-/thaw damage	✓	✓	✓	✓
soiling by installation on construction site	✓	✓	✓	✓
food and oil-spills	✓	✓	-	○
general soiling/staining	✓	✓	✓	✓
formation of moss and algae	✓	✓	✓	✓
weathering, loss of colour	✓	✓	✓	✓
graffiti	-	○	-	✓

Application:

by sprayer, brush, roller ...	✓	✓	✓	✓
suitable for automatical spraying systems	✓	✓	○	○
suitable for UV- and/or IR drying systems	✓	✓	○	-

Symbol explanation: ✓ applicable/suitable ○ partially applicable/suitable - not applicable/suitable

Please study our technical data sheets prior to application and always conduct pilot tests under real application and production parameters and a suitable observation time.



HEBAU GmbH
products for good-looking concrete
www.hebau.de

mail@hebau.de
An der Eisenschmelze 13
D- 87527 Sonthofen

Tel : +49 8321-6736-0
Fax : +49 8321-6736-36